

Reception 2024 Intake

The closing date for applications for next year's Reception class is Monday 15th January 2024.

Parents of nursery aged children (born between 1st September 2019 and 31st August 2020) must make sure they apply before the closing date. Any applications received after this date will be considered as late applications and processed after National Offer day which is 16th April 2024.

Applications can be made on the eAdmissions website. For more information, click the link below.

<https://www.walthamforest.gov.uk/schools-education-and-learning/apply-primary-school>

We will be hosting Reception tours on the following dates:

Friday 24th November (tour now full)

Friday 1st December

Friday 8th December

Friday 15th December

All tours will take place at 9.10am. To book a place on one of the tours, either call or email the school office 0208 529 6827 / chaselanepri@clpwalham.org.uk

Black History Month poetry competition

As you are aware, at Chase Lane we celebrate Black History Month during October.

The children will be taking part in a wide range of different related activities at school during this month. If you are looking for something to do at home, you may wish to work with your child to enter the Black History Month poetry competition.

This competition is open to all children across the country and this year, poets are being encouraged to write poems which celebrate the lives of inspirational black women. All the details for the competition can be found by clicking this link: <https://shorturl.at/tNOP7>

Consider Residents When Parking

A small number of our families need to drive their children to school. If this applies to you, then please be aware of the bottle neck that is York Road. It becomes very busy and sometimes quite dangerous.

Mr Jeffery appreciates how busy it is in the morning but politely reminds parents **not** to park their cars on the yellow zig-zag lines. Also, please be courteous to our neighbours by refraining from blocking driveways and properties. This week we received complaints about this from our neighbours.

If you are now one of the increasing many that drive an electric vehicle, please be **extra** cautious as they can be so quiet, children and adults alike do not always hear them coming and may well step out. In addition if you are a pedestrian, please keep looking as well as listening.



Clubs

We have spaces in the following clubs:

Year 1 Football	2 spaces
Year 1 Basketball	1 space
Year 2 PE	1 space
Year 3 & 4 Choir/singing	7 spaces
Year 3 & 4 Dance	1 space
Year 3 - 5 Gardening	10 spaces
Year 5 & 6 Wool	3 spaces
Year 5 & 6 Fish	1 space



If your child is interested in doing any of these clubs, please email Mrs Blackmore chaselanepri@clpwalham.org.uk

Attendance 18th - 22nd September 2023

Very well done to the following classes for achieving the highest attendance percentage in their Year Groups :- over 96%. The minimum target for attendance each week as set by the Government is 96%.


Year group	Class	Attendance
Year 1	Eucalyptus	99.2%
Year 2	Acacia	99.6%
Year 3	Sycamore	99.2%
Year 4	Hawthorn	100%
Year 5	Elm	98.8%
Year 6	Olive	100%



During the above period our overall school attendance was 97.8%. Well done to **Hawthorn** class and **Olive** class for having 100% attendance. Excellent effort children.

MHST Logo Competition

Please read the flyer below for information about a Mental Health Support Team (MHST) logo design competition. Entries must be handed to Mr Hill by Tuesday 3rd October.



LOGO DESIGN CONTEST

Hello! We are the Waltham Forest Mental Health Support Team.
Help promote our support services for children and young people in schools.

WHAT DO YOU NEED TO DO?

- Read the prompts on Page 2 and design a logo to promote our mental health support service for children and young people in schools.
- Submit your design in person to Mr Hill or the MHST Team Member Noor/ Oliver at your school on 03/10/2023.
- Mention your name, year group and school name.

WHY SUBMIT A DESIGN?

- Each designer will receive free merchandise once the contest closes - we are thankful for your participation!
- The winning designer will be awarded an Amazon voucher worth £25!
- The winning design will be used to promote our service across Waltham Forest as the official logo of the Mental Health Support Team.

FREQUENTLY ASKED QUESTIONS

I only want to draw and not use the computer or phone, is that okay?

- Yes, that is absolutely okay! We will equally consider all designs, freehand or graphic.

I have more questions, who do I ask?

- You can direct them to your Mental Health Lead, Mr Hill.

Win a £25 Amazon voucher!
CONTEST DEADLINE: 6th October 2023

Parents Forum

Our Parents' Forum consists of a group of parents who volunteer to attend termly meetings in school whereby parents can share their views and ideas about different areas of school life. It is hoped that a parent from each class will be at each meeting, together with Mr Jeffery & Mrs Dasilva. These meetings are intended to be an informal discussion forum.

The next Parents' Forum will take place in school on **Tuesday 10th October** at 2.30pm - 3.15pm.

If you are free to spare approximately 45 minutes to attend, please advise the Office Manager, Mrs Dasilva by email at:

chaselanepri@clpwalham.org.uk by Friday 6th October.



Preloved Uniform Sale

We will be holding a **preloved uniform** sale on **Tuesday 3rd October, 3pm - 3.20pm** outside the main school office.

**PRELOVED
UNIFORM
SHOP**

All items will be sold for 50p each. Please note, we will **only accept cash**, therefore we ask that you bring the correct change as we will not be able to change large notes.

Birthdays in School



Parents/Carers are kindly reminded, please do not send sweets, cakes or other treats into school for the teacher to distribute for your child's birthday.

If your child would like to give something to their class to mark their birthday, why not wrap up a book to add to the class book corner? Your child can then unwrap it in class with their friends.

Secondary Admissions September 2024

Year 6 parents/carers are reminded that you can now apply for a secondary school place for your child for September 2024. This year's application window runs from **1st September 2023** until **31st October 2023**.

Before you apply, you should research the local secondary schools. This will help you decide which schools to put down as your preferences. You can choose up to six and it is recommended you do complete all six. To find out more about a school, you should do the following:

- Go to the school's Open Day. Dates are listed on the Waltham Forest website. Click below for the link.
<https://www.walthamforest.gov.uk/schools-education-and-learning/apply-school-place/apply-secondary-school/researching-secondary-schools>
- Visit the school website
- Ask other parents what they think of the school
- Look at the school's latest Ofsted report and school performance tables

Click the link for full details on how to apply:

<https://www.walthamforest.gov.uk/schools-education-and-learning/apply-school-place/apply-secondary-school/how-apply-secondary->

Harvest Assembly

Our Harvest assembly will take place on **Thursday 12th October**.

The children will learn to recognise the importance of harvesting the crops, the value of food and supplies to all in our community and giving thanks to the farmers who work all year round to provide for us.



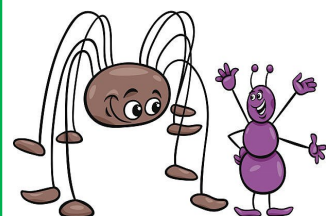
Soap
Shower gel
Toothpaste
Shampoo
Sanitary care

This year, as well as asking for your kind donations of non-perishable groceries, we kindly ask for personal hygiene items such as:



All donations will be given to the local food bank so that your kindness is passed on to those who need it most in our local community.

Fun Fact



Daddy Longlegs spiders are sometimes said to be one of the most venomous bugs, but this is **NOT TRUE**.

They are actually completely harmless. They don't have any poison, and they don't bite anyway.

Reception Maths Meeting



Reception parents/carers are reminded that there will be Maths meeting taking place next Friday 6th October at 9.10am, in the school hall.

Please drop your child off in class and then make your way around (not through the school building) to the main entrance.

The meeting will last around 45 minutes and offer you a chance to learn about maths in Reception and how you can support your child at home.

Census Day Menu 5th October 2023

Please see below the menu for next Thursday 5th October 2023.

Census Day Menu

Mains

Sweet Potato Wrap(ve)
Creamy Mac 'n' Cheese (v)
Burger in a Floured Bun

Sides

Skin on Baked Wedges

Unlimited

Oven Roasted Carrots with Thyme
Sweetcorn

Desserts

Chocolate Brownie (ve) with Ice Cream (v)
(ve)
Seasonal Fresh Fruit Platter
Organic Fruit Yogurt

Menus are subject to change based on availability of ingredients



Waltham Forest Residents News

Click the links below to view the latest Waltham Forest Residents news:

<https://content.govdelivery.com/accounts/UKWALTHAM/bulletins/3724ebf>

Forest Week

Forest week is an annual campaign to spread awareness of the value of forests and about the importance of sustainable forestry. It takes place between 23rd - 29th September.



To celebrate Forest Week, Hale End library are hosting a fun craft session from 11am - 12pm, tomorrow Saturday 30th September.

This is a free event suitable for children 5 years and above.

Speech & Language Therapy - Chingford

If you need support with your child's communication skills (aged 0 to 4) why not drop in to one of the speech & language sessions at the Chingford family hub?

These sessions run on the first Monday of each month.

Time: 9:30am to 11:30am

Location: Chingford Family Hub, Wyemead Centre, 5 Oaks Grove, Chingford, E4 6EY

Cost: Free, just turn up.

The next session takes place on **Monday 2nd October**.



Diary Dates Autumn Term 2023-2024

Any additions/changes to the diary dates are highlighted in purple text

Autumn Term

Tuesday 3rd October	3pm - 3.20pm Preloved Uniform Sale
Friday 6th October	Olive class trip to Imperial War Museum
Friday 6th October	9.10am Reception Parents Maths meeting
Tuesday 10th October	2.30pm— 3.15pm Parents Forum
Thursday 12th October	Harvest Assembly
Friday 13th October	6.30pm - 8.30pm PTA Family Bingo
Monday 16th October	Van Cols Individual Pupil Photos
Friday 20th October	Reception Golden Rules Dress Up Day - details to follow

Monday 23rd - Friday 27th October HALF- TERM HOLIDAYS

Friday 3rd November	6.30pm - 8.30pm PTA Year 3 & 4 Disco - details to follow
Tuesday 7th November	Cedar class trip to Queen Elizabeth Hunting Lodge - details to follow
Wednesday 8th November	Cherry class trip to Queen Elizabeth Hunting Lodge (AM) - details to follow
	Hawthorn trip to Queen Elizabeth Hunting Lodge (PM) - details to follow
Friday 10th November	INSET Day - school closed to children
Friday 17th November	6.30pm - 8.30pm PTA Year 5 & 6 Disco - details to follow
Monday 20th November	Extra-curricular clubs end this week

Wednesday 22nd November

School Flu Vaccinations

Monday 27th November

School Flu Vaccinations

Monday 27th November	Parent Consultations - full details to follow
Thursday 30th November	Parent Consultations - full details to follow
Friday 1st December	6.30pm - 8.30pm PTA Year 1 & 2 Entertainment event - details to follow
Thursday 7th December	9.15am & 1.45pm Year 1,2 & 4 Concert
Thursday 14th December	9.10am Reception Concert
Sunday 10th December	12pm - 3pm PTA Christmas Fair - details to follow
Monday 18th December	9.00am Year 3,5 & 6 Festive Assembly
Tuesday 19th December	Nursery Concert AM/PM
Thursday 21st December	School closes 1 hour earlier than usual for Christmas holidays

Week 2 School Dinner Menu for w/b 2nd October 2023

Spring/Summer Menu 2023 2nd Week	Monday	Save The Planet Tuesday	Allergen Free Wednesday	Friday
CHOICE 1	Pasta Arrabiata (ve)	Pulled Jackfruit Wraps (ve)	Chickpea Tikka Masala (ve)	Sticky Tofu (ve)
CHOICE 2	Jacket Potato with various Fillings (v)(ve)(df)(gf)	Cheese & Potato Pinwheels (v)	Roasted Pepper & Chickpea Risotto (ve)	MSC Golden Crumb Fish Fingers (df)
CHOICE 3	Chilli Con Carne	Bolognese (v)(df)	Piri Piri Chicken	Chicken Creole
Sides	Mixed Rice	Spicy Jacket Potato Wedges (ve) Wholewheat Spaghetti	Coconut Rice (ve)	Oven Baked Chips (ve) Lime & Coriander Infused Rice (ve)
Vegetables	Green Beans (ve) Fresh Organic Carrots (ve)	Minted Garden Peas (ve) Sweetcorn (ve)	Mixed Vegetables (ve) Seasonal Fresh Cabbage (ve)	Baked Beans (ve) Fresh Organic Carrots (ve)
Salads	Salad Selection (v)	Salad Selection(v) (ve)	Salad Selection (ve)	Salad Selection (v)
Desserts	Cheese & Crackers with Fresh Apple Slice (v)	Shortbread Biscuit (ve) & Milk (v) (ve)	Iced Fruit Smoothie (ve)	Fresh Fruit & Ice Cream
DAILY	Organic Fruit Yogurt (v) with Seasonal Fresh Fruit	Organic Fruit Yogurt (v) with Seasonal Fresh Fruit	Fresh Fruit Salad (ve)	Organic Fruit Yogurt (v) with Seasonal Fresh Fruit
DAILY	Seasonal Fresh Fruit (ve)	Seasonal Fresh Fruit (ve)	Seasonal Fresh Fruit (ve)	Seasonal Fresh Fruit (ve)
Bread	Homemade Bread (v)	Homemade Bread (v)	Homemade Bread (ve)	Homemade Bread (v)

Community News

Half Term Gymnastics Short Courses at Walthamstow Leisure Centre



5 – 7 years	8 + years
Friday 27 th of October 2 - 4pm	Wednesday 25 th of October 2 - 4pm

Price - £12

Available to book now on Better App or Better website

<https://betterflow.courseprogress.co.uk>

Come along and try out our fun packed gymnastics lessons or improve on existing gymnastics skills!

Everyone is welcome

Please note places are limited we recommend booking early to avoid disappointment

How to find us

Walthamstow Leisure Centre
Markhouse Rd, London E17 8RN



For more info email: walthamstow@gll.org

NHS Dentists in Waltham Forest



This is an up-to-date list of NHS dentists currently offering routine appointments and accepting new patients

Forest Dental Care
73 Hoe Street
E17 4SA
0208 521 3777

Mr Evans and Associates
252a Chingford Mount Road
E4 8JL
0208 529 1587

Chingford Road Dental Surgery
31 Chingford road
E17 4PW
02085279062

Park Vue Dental Surgery
330 Cann Hall Road
E11 3NW
02085192990

Lea Bridge Dental Practice
433 Lea Bridge Road
E10 7EA
0208 539 6152

Leyton Dental Surgery
724 High Street Leyton
E10 6AA
02085396022

Mr P Wong & Associates
123 Hoe Street
E17 4RX
02085204151

Hoe Street Dental Surgery
337 Hoe Street
E17 9BD
02085205289

Woodgrange Dental Practice
80 Woodgrange Road
E7 0EW
208553336

Cedars Dental Practice
775 High Road Leyton
E10 5AB
02085581122

L Wong and F Wong
845 High Road Leytonstone
E11 1HH
02085394720

☎ 020 8496 5223

✉ wfsupport@henry.org.uk

Please note that we do not endorse or recommend any particular practice.

This list is up-to-date as of the 25 Sept 2023.



Educational Psychology Service Free Monthly Parent/Carer Consultation Sessions

Dates:

20th September 2023
18th October 2023
22nd November 2023
6th December 2023
17th January 2024
28th February 2024
27th March 2024
24th April 2024
22nd May 2024
19th June 2024
17th July 2024

To book a 30 minute consultation, please contact our Business Support Officer below

EDUCATIONAL
PSYCHOLOGY SERVICE

Thorpe Hall School
123 Hale End Road
E17 4DP

Office
02084961732 07776 589 597

Do you have concerns about your child?

Would you like to talk to an Educational Psychologist in confidence?

Appointment Only Sessions

Afternoon sessions are 12.30-2pm
Evening Sessions are 3.30– 5.00

Individual consultation with an Educational Psychologist are offered via phone/zoom or in person for Parents and Carers living in London Borough Waltham Forest.

Sessions last for no more than 30 minutes and provide an opportunity to ask any questions or discuss concerns with a member of our culturally diverse Educational Psychology Team.

Educational Psychologists are qualified specialists in child psychology and child development, with particular expertise in supporting children and young people with special educational needs, learning difficulties, and social, emotional and behaviour difficulties. All LBWF Educational Psychologists are registered with the Health Care Professionals Council.

educationalpsychologyservice@walthamforest.gov.uk



Premier League
Kicks

SCORE GIRLS FOOTBALL

Free 'just turn up and play' football sessions for the local community. Come along and meet new people, make new friends and develop your skills!

ACTIVITIES

- ✓ Fun games and matches
- ✓ Tournaments & competitions
- ✓ Accredited Courses
- ✓ Workshops

OPPORTUNITIES & PATHWAYS

- ✓ Leyton Orient Matchday Experience
- ✓ Play against Grassroots & CCO teams
- ✓ Coaching & Volunteering
- ✓ Emerging Talent Centre

WEDNESDAYS

4:00pm – 5:00pm
5:00pm – 6:00pm

AGE GROUPS

→ Age 5 to 11
→ Age 12 to 16

SCORE LEISURE CENTRE

100 Oliver Road,
E10 5JY

SCAN OR CODE
TO SIGN UP



Registration Link:

forms.office.com/e/2AxLbP3eeY

For more Information:

Emma.Thorne@leytonorienttrust.org.uk

Supported by:

