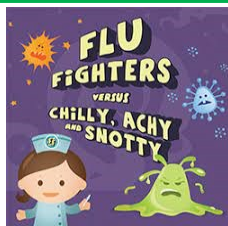


Flu Nasal Spray Vaccine



Flu vaccination is one of the most effective interventions we can provide to reduce harm from influenza and pressure on our health, social and care services during the winter. The children's nasal spray flu vaccine is safe and effective. It's offered every year to children to help protect them against flu. Flu is caused by the influenza virus. It can be a very unpleasant illness for children. It can also lead to serious problems, such as bronchitis and pneumonia. Children can catch and spread flu easily. Vaccinating them also protects others who are vulnerable to flu, such as babies and older people.

Earlier this week Flu Nasal Spray vaccine consent forms, were sent home. The consent form must be completed and returned to the school office via your child's class teacher **even** if you do not want your child to have it done. The completed form must be returned to the school office by **Thursday 7th October**.

Parents who do not want their child to have the flu nasal spray can opt to have their child receive the influenza injection (**which does not contain porcine products**) instead. If you would like your child to receive the flu injection immunisation, you must also request an influenza injection consent form from the school office.

The school nurses have recommended parents watch 'Flu Hero' which is a cartoon on YouTube <https://youtu.be/w5LBU9KIay8> that gives child friendly information about the vaccine.

Macmillan Cancer Support

Last week Chase Lane staff held a MacMillan event to support Macmillan Cancer Support. Staff baked and donated some amazing sweet treats.



A big thank you to Miss Gill and Mrs Brackpool for organising the event. We are really pleased to announce that we raised **£296.22** for this very worthy charity.

Community News



October is **Black History Month** and Waltham Forest council are celebrating with a range of events for families including art exhibitions, storytelling, musical workshops, a chance to meet local black artists, authors, and more! In school cultural heritage continues to be celebrated within the curriculum and assemblies.

For more details, check out the Waltham Forest website <https://wfculture19.co.uk/BHM2021>

Van Cols Individual Photos



Please remember that the school photographers, Van Cols, will be visiting our school on **Monday 11th October** to take individual photos of the children. Please ensure your child/children are dressed in their smartest uniform, prefects wear their blazers and arrive to school on time on that day. Thank you in advance.

Attendance 20th-24th September 2021

Congratulations to the following classes for achieving the highest attendance percentage in their Year Groups; over 96%.



Year Group	Class	Attendance %
Year 1	Ash	99.3%
Year 2	Cedar	98%
Year 3	Elm	96.5
Year 4	Hazel & Sycamore	99.3%
Year 5	Eucalyptus	97.9%
Year 6	Oak	98.1%

The minimum target for attendance each week as set by the Government is 96%. During the above period our overall school attendance was **96.9%**

PTA Events

Family



The Friends of Chase Lane PTA will be hosting the following events this month:
Friday 8th October, 6pm - 8pm Family Bingo night in the school hall. Mr Wingrove has kindly offered to be our Bingo caller for the night. The entrance fee is 50p per family.

Families do not need to book a place, simply turn up and enjoy a fun-filled evening!

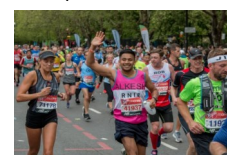
Friday 22nd October, 6.30pm - 8.30pm Lower Phase Disco, (Years 2 & 3)

The entrance fee is £4 and includes mix and match 2 bags of crisps or popcorn and unlimited juice. If you are available to help support the event in any way, please email the PTA at friendsofchaselane@hotmail.co.uk and one of the PTA members will contact you.



The London Marathon

The London Marathon is an internationally renowned long-distance race where runners run a course around the historic sites of London. Runners of all abilities take part in the race in order to raise money for different charities.



Last year, because of the coronavirus pandemic, the race had to take place virtually but this year the London Marathon is back and it's promising to be bigger and better than ever!

The wait for thousands of runners is almost over as they take to the road on **Sunday 3 October**. This year, a record 100,000 runners are expected to take part in the 26.2 mile race.

There are usually thousands of supporters cheering the runners along the route, but this year, in order to keep crowds to a minimum, local people are being encouraged spread out around the course, rather than congregate in popular areas. Runners have also been told to only bring along one friend or family member to cheer them on.

Well done to all those taking part.

NO Parking In Soper Close

We politely ask that parents/carers, please **do not** to park in Soper Close, on the zig-zags or yellow lines. Thank you for helping to keep all our children safe.

Please do not park on the ZIG-ZAGS

Secondary Open Evenings

Is your child
**STARTING
SECONDARY
SCHOOL**
next year...

Secondary School Admission
places are now open for
September 2022

Apply by
31 October 2021

Term Dates For Academic Year 2021-2022

Summer Term 2 Monday 6th June 2022 - Friday 22nd July 2022

School Dinner Menu w/b 4th October 2021

Week 1	Monday (save the planet day)	Tuesday	Wednesday	Thursday	Friday
CHOICE 1	Planet Pizza (V)	Meatballs in Tomato sauce	MSC Lemon Crumb Salmon Fillet with Lemon Twist	Jerk Chicken	MSC Fish Fingers
CHOICE 2	Jacket Potato & Beans (V)	Mac N Cheese (V)	Sweet Potato Korma (VE)	Cheese Wrap (V)	Samosa (VE)
Sides	Jacket Wedges	Wholemeal Spaghetti	Steamed Minted New Potatoes 50/50 Rice	Rice and Peas	Oven Baked Chips
Vegetables	Sweetcorn Minted Garden peas	Mixed Vegetables Broccoli	Shredded Green Cabbage Organic Carrots	Sweetcorn Green Beans	Baked Beans Minted Garden Peas
Dessert	Organic Fruit Yogurt	Organic Fruit Yogurt	Organic Fruit Yogurt	Organic Fruit Yogurt	Organic Fruit Yogurt
	Seasonal Fresh Fruit	Seasonal Fresh Fruit	Seasonal Fresh Fruit	Seasonal Fresh Fruit	Seasonal Fresh Fruit

Music Lessons



Should your child wish to start learning, please email Mrs Silcott chaselanepri@clpwaltham.org.uk in the school office for more information.

No playing on School Equipment After School



Children should not be playing on school equipment at the end of the school day. Please help us by reinforcing this message to your child/children. Thank you

Stay & Play Sessions Are Full



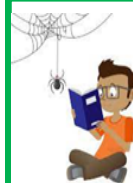
Our Stay & Play sessions for Autumn term are now full on both days.

Joke of the Week

A. Rrrrrrrrrrrrrrrrrrrrrrrrrrrrr



Vocabulary Corner



Example-
Jonah was completely **oblivious** to the spider that was right in front of him.